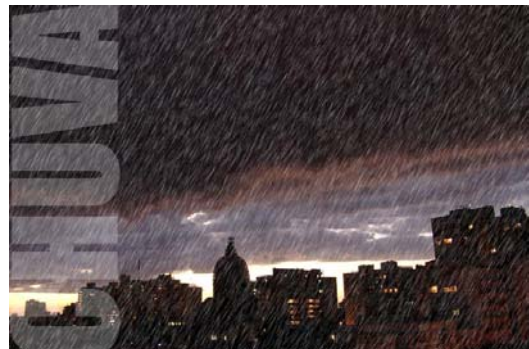
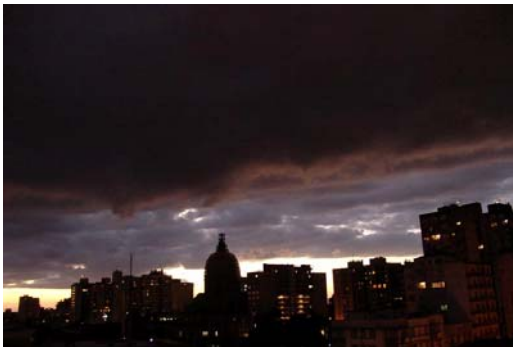


Só não Faz Chover.

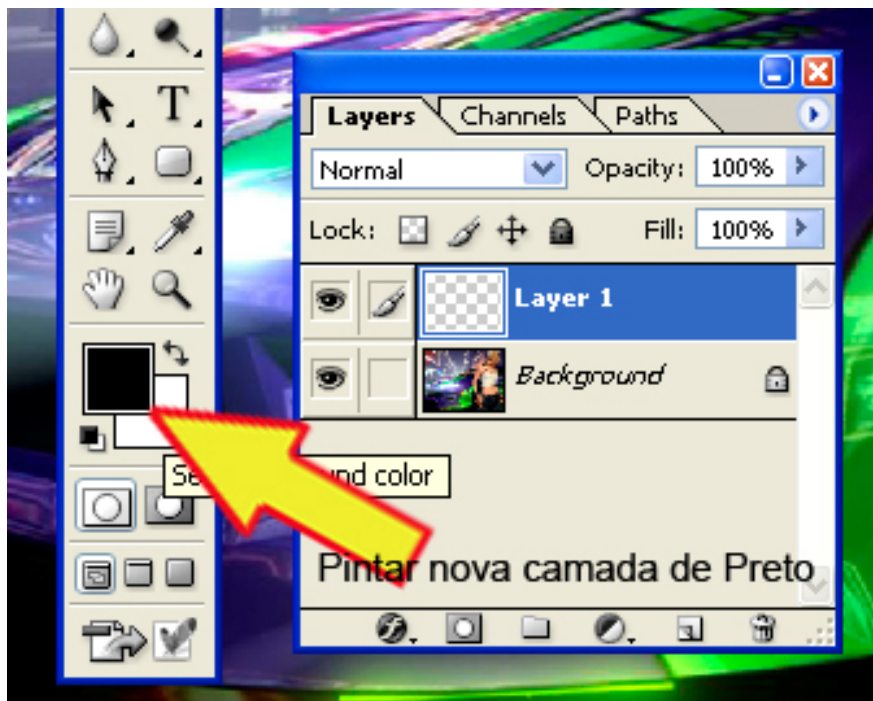


Ou será que faz ???

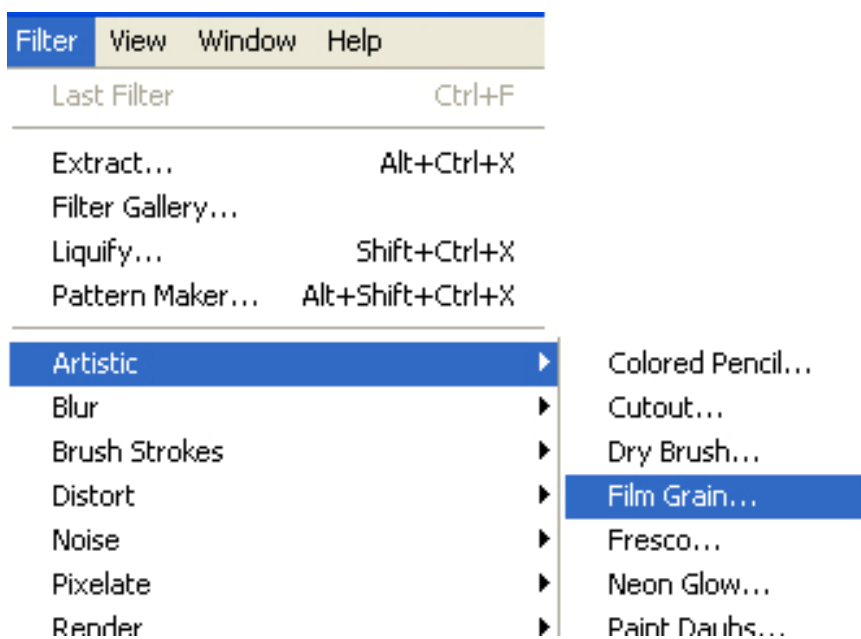
Selecione uma imagem para transformá-la em dia chuvoso.

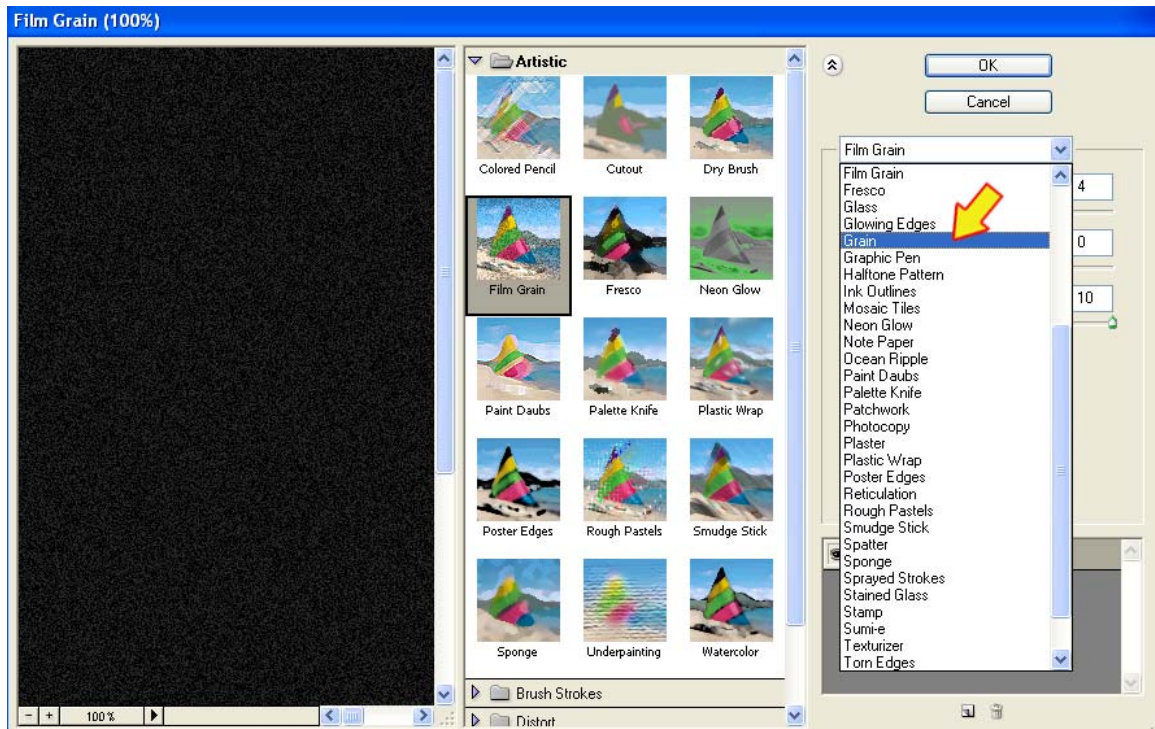


Crie uma nova camada (**layer**) acima da imagem escolhida. Pinte esta nova camada de preto (pode ser com a ferramenta **Paint Bucket Tool** ou simplesmente **Alt+Del**)

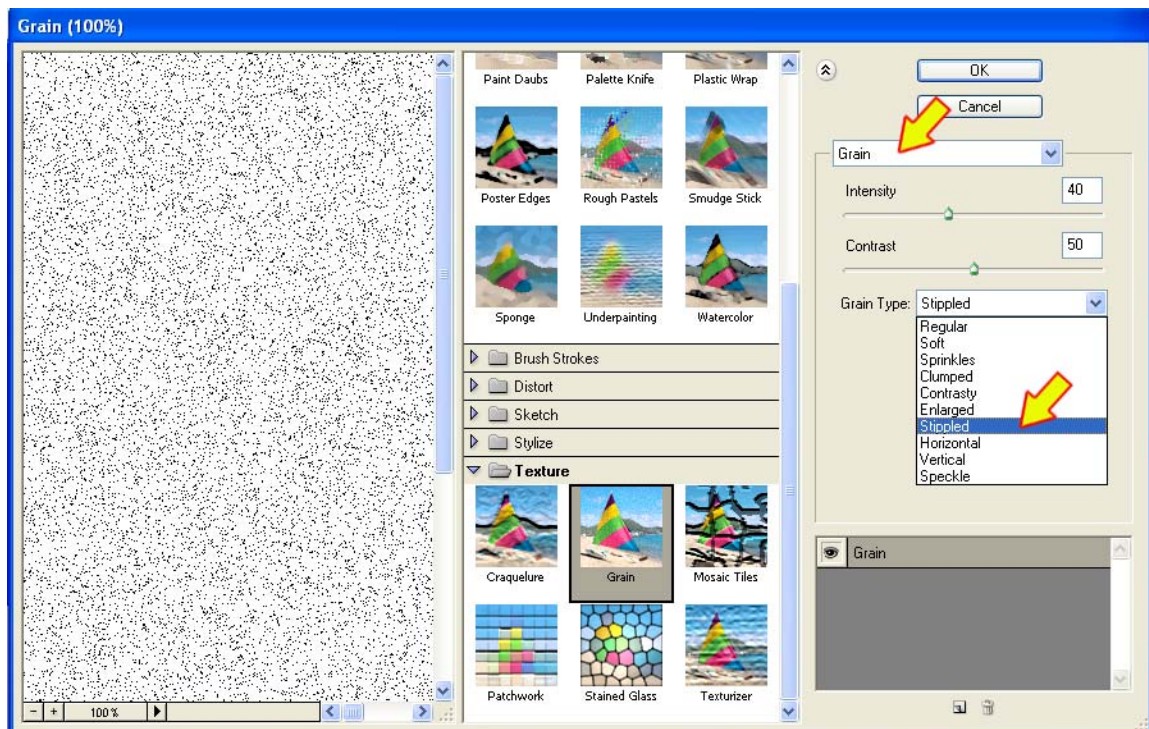


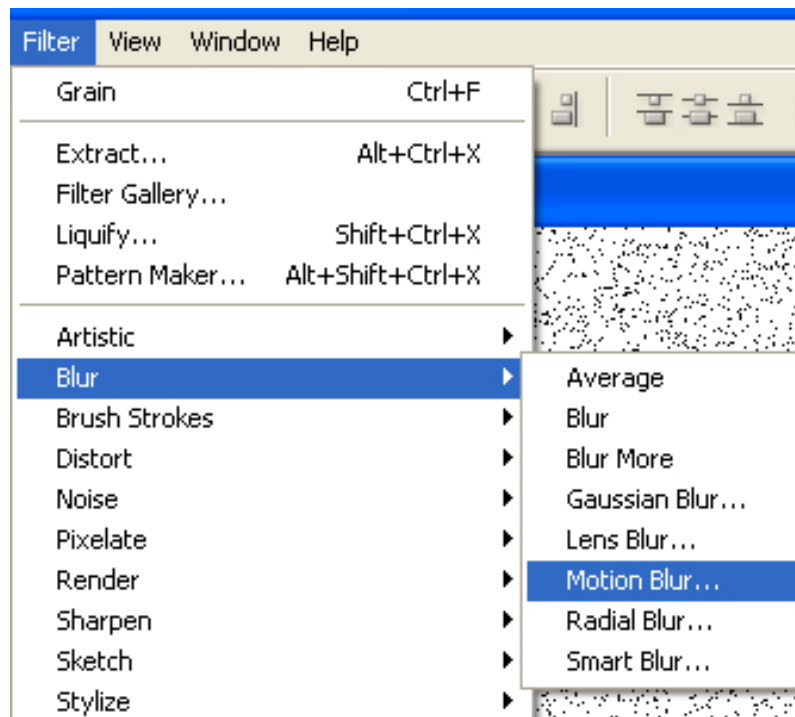
Estando na nova **layer** (camada preta), **Filter>Artistic>Film Grain**:



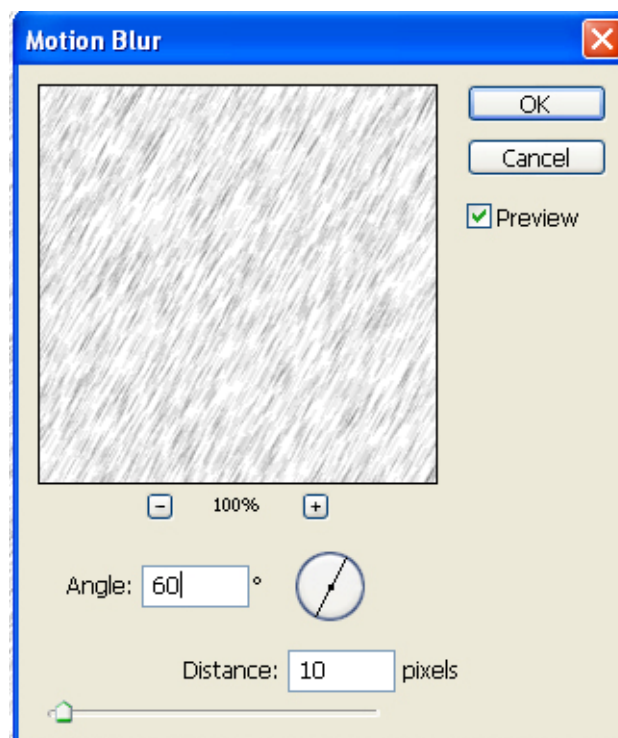


Abra o campo **Film Grain** > **Grain** e seleccione : **Stripped**





Filter > Blur > Motion Blur





Alterar de **Normal** para **Screen**;

